

# Smart Apply Introduces GEN2 of the Intelligent Spray Control System

## Robust Performance in the Field...and the Cloud



**GEN2 of Smart Apply's Intelligent Spray Control System** is uniquely suited for the daily grind of crop protection. The system is now easier to integrate and maintain, while empowering specialty crop growers' profitability and compliance with chemical, water and sustainability mandates. **Now featuring optional integration with the Deere Operations Center.**

### GEN2 Precision Spraying

50% fewer electrical connectors

Single power harness with a circuit breaker that protects the battery + eliminates fuses

Common ground that reduces number of wires to solenoids

Expanded control board to support up to 40 spray nozzles

Sealed junction box for better weather protection, easier wire + component management

Heavy-duty Android tablet with improved data connections

### GEN2 Precision Data

Automatically creates digital documentation of chemical use and savings + is viewable in real time

Ability to program the day's spray schedule, including multiple tracts + operators

Expanded data collection + reporting of chemical application volumes + rates, chemical savings, tractor speeds, operator performance

Ability to document type of chemicals used during each spray session

More intuitive operating screens for ease of use, including a choice of languages

Increased Cloud storage of spray data





*“Today’s growers face rising costs, mandates on chemical and water use, and verification requirements from governments, export partners and brands. Smart Apply’s GEN2 is a transformational tool that empowers growers to meet these challenges head-on while making their operations simpler, more profitable and sustainable. The ability to integrate with Deere’s Operations Center is another benefit that distinguishes Smart Apply from other sprayer systems.”*

—Jerry Johnson, CEO, Smart Apply

## Meet the Smart Apply System GEN2



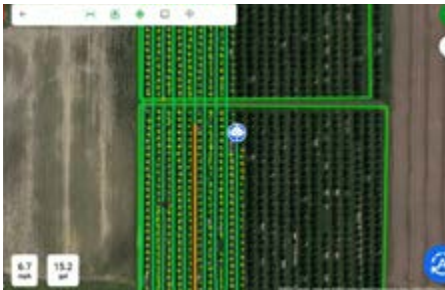
GEN2 is sold as a kit compatible with virtually all air blast sprayers.



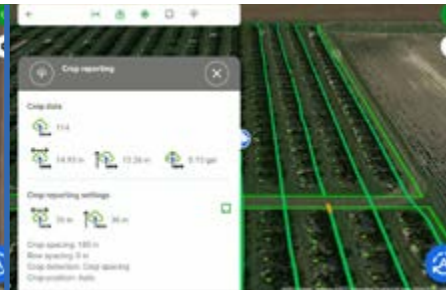
Sealed junction box for maximum weather protection, easy access.



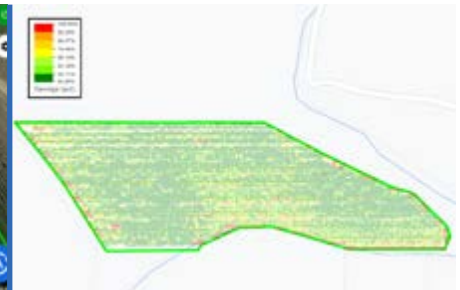
50% fewer electrical connectors, single harness + no fuses.



Track job progress, including location and volume of crop count. Red = larger trees/vines.



Crop reporting in real time with counts, average height, width + volume of trees/vines.



Chemical savings report. Red = 100% savings. Dark green = 46% minimum savings.



**Find An  
Authorized  
Smart Apply  
Dealer Near You**

